

MAST/RAIL MOUNT - HEAVY DUTY

Solid Brass Pole Bracket (G1"-11)

- Very strong heavy duty bracket for installation of Marine and Base Station antennas on pole
- Made of solid brass and PU powder coated for long term use at sea
- It can be mounted vertically overhead or on side of poles with diameters from 38 mm to 75 mm (G2 1/2 water pipe) as well as horizontally on side beams with diameters from 30 mm to 75 mm. Optionally it can be placed on wall
- Especially made for antennas accepting the 1" Revolving Nut mounting system
- Stainless steel hardware included
- FOR ALUMINIUM POLE INSTALLATIONS: Special version supplied with stainless steel inlets to prevent galvanic corrosion between the bracket and the aluminium pole

Mechanical Specifications:

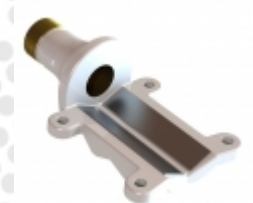
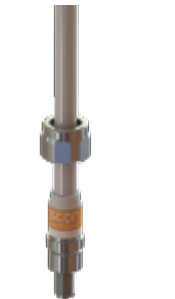
Color	White
Weight	1500 g (Hardware included)
Mounting	With supplied U-bolts
Materials	Solid brass and stainless steel
Mounting place	On vertical or horizontal pole (optionally on wall)
For Antenna Types	All Marine and Base Station antennas accepting the 1" Revolving Nut mounting system
Mounting Instruction	NOTE! 1" Revolving Nut Kit 10000-430 is not included
Dimensions	175 x 103 x 66 mm

Ordering information:

Part no.	10000-133 (in box)
Part no.	10000-133A (for aluminium pole/tube mounting; in box)

Packing information:

Packing	Hard box
---------	----------



Outline Drawing

